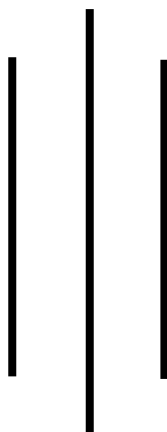


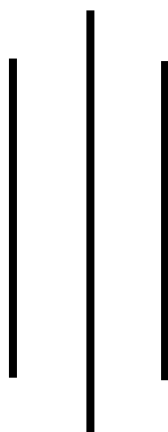
Tracer Study Report (2021)

Birendra Bidhya Mandir Campus
Tikapur, Kailali



Submitted to:

University Grants Commission
Sanothimi, Bhaktapur



Submitted by:

Birendra Bidhya Mandir Campus
Tikapur, Kailali
11 August, 2023

Date: 11 August, 2023

The Chairman

University Grants commission

Sanothimi, Bhaktapur

Subject: Regarding the Submission of Final Tracer Study Report-2021

Dear Sir

As per the University Grants commission's public announcement for the preparation and submission of Tracer Study Report by the Institution selected under NEHEP for Extended performance Based Funding; we would like to submit Detailed Tracer study Report (2021-Graduates) of Birendra Bidhya Mandir campus, Tikapur, Kailali. We look forward for positive response from you soon.

Thanking You,

.....

Harka Bahadur Bhandari

Campus Chief

Acknowledgement

Birendra Bidhya Mandir Campus would express deep gratitude to University Grants Commission, Nepal for its continuing support that enables us to have this tracer Study Report. We are also thankful to the graduates of 2021 of BMC who provided us all the required information for the completion of this Tracer study Report. Our thanks also go to the campus administration, faculty members and non-teaching staff for their kind co-operation and valuable suggestion for the completion of the task.

Executive Summary

This Tracer study Report has been prepared to trace out the graduates of Birendra Bidhya Mandir Campus Tikapur, Kailali. The selected students were the graduates of 2021 from the Faculties of Management and Education. The report has been divided into four chapters. The first chapter is introductory. The Second one presents and analyses the data. The third chapter provides the major findings of the report and the fourth chapter draws the conclusion and suggests some recommendations. The aim of writing this report was to find out the issues related to the quality and relevance of higher education. The study was also aimed to use the report for the formulation and amendments of its strategic plan as per the needs and expectation of market and the society. In order to get the needed information, both quantitative and qualitative methods were employed for data collection purpose and a questionnaire for interviewing was piloted to make sure that the correct information could be collected. The notice for tracer study was shared using the social media/ face book. Those who couldn't come in contact were contacted through telephone and email. Required information was collected; individual forms were filled up through face to face interview, telephonic conversation and via mails. All the selected information was compiled, analyzed and evaluated and the final report was prepared.

LIST OF TABLES

Table No.	Topic	Page
No.		
1	Total graduates of the year 2021	5
2	The caste wise composition of tracer study completed	5
3	Employment Status of the graduates	6
3	Relevancy of the programs for professional requirements	9

LIST OF FIGURES

- Figure 1: Gender wise composition of graduates
- Figure 2: Employment status of Graduates
- Figure 3: Gender wise composition of graduates in Management
- Figure 4: Employment Status of Graduates of Management
- Figure 5: Composition of Graduates of Education
- Figure 6: Employment Status of Graduates of Education

ABBREVIATIONS

E	-	Employed
NEHEP-		Nurturing Excellence in Higher Education Program
U	-	Unemployed
BMC	-	Birendra Bidhya Mandir Campus
UGC	-	University Grants Commission
TU	-	Tribhuvan University

Table of Contents

ACKNOWLEDGEMENT	I
EXECUTIVE SUMMARY	II
LIST OF TABLES	III
LIST OF FIGURES	IV
ABBREVIATIONS	V
CHAPTER: ONE	1-4
1. INTRODUCTION:	1
1.1 Background	1-2
1.2 Objectives of the Study	2
1.3 Institutional Arrangements to Conduct the study	3
1.4 Graduate Batch taken for the Study	3
1.5 Data Collection - Instruments and Approach	3
1.6 Scope and Limitations of the Study	3-4
CHAPTER: TWO	5-11
2. Data Presentation and Analysis	5
2.1 The Profile of the Graduates	5
2.2 Employment Status of the Graduates	5-6
2.3 Faculty wise Analysis of Employment Status	7
2.3.1 Faculty of Management	7
2.3.2 Faculty of Education	7
2.4 Expectations and Aspirations of Graduates	8
2.5 Employment Experience of Graduates	8
2.6 The Quality and Relevancy of Higher Education	8
2.7 Issues Related to Quality and Relevance of Higher Education	8-9
2.8 Refectory (Canteen)	9-10
CHAPTER: THREE	11-12
3. Major Findings	11
3.1. Implications to institutional Reforms	11-12

CHAPTER: FOUR

13

4. Conclusion and Recommendation	13
4.1 Conclusion	13
4.2 Recommendations	13

Appendix

- Annex: 1 Tracer Study Profile of Graduates of Management
- Annex: 2 Tracer Study Profile of Graduates Education
- Annex: 3 Transcripts of Graduates
- Annex: 4 Job appointment Letters

1. Introduction

1.1 Background

Birendra Baidhya Mandir is an emerging community campus, established in 2063 BS, with the collaborative efforts of local people comprising academically aware intellectuals, businessmen/women, social workers and guardians. This autonomous, non-profitable academic institution is situated at the heart of Tikapur Municipality, Ward number 1, Block D, Kailali; Far Western Province of Nepal. It is affiliated to Tribhuvan University and at present offers Bachelor and Post graduate programs in Management and Education. Since its inception, it has been imparting quality education in an affordable fee to the most marginalized and backward community of the country in the far-west Nepal, to bring positive societal change and development through academic excellence. It is managed by Birendra Bidhya Mandir Public Educational Ttrust.

The campus' history goes back to 2031 BS along with the establishment of Tikapur town by Late Khadga Bahadur Singh, the pioneer of academic sensibility of the contemporary Tikapur. Began in 2031 BS, as the only community school in the far-west, Birendra Bidhya Mandir reached to campus level in 2063 BS and has now up to post-graduate programs to serve the society. Started with meager 99 students in one building having 12 rooms, has now over 1931 students with five buildings having 50 rooms in One Bigha 18 Katha (12950 Square meters) campus premises. The campus is also in the process of registering other 12 Bighas land in its name from its mother organization, Birendra Bidhya Mandir Secondary School, Tikapur for the fulfillment of its land scarcity.

In the last 16 years, BMC has set some landmarks in educational history of Tikapur. It has completed PRT cycle and declared as a QAA Certified Institution from Board Meeting of UGC held on 7 July, 2023. It offers Bachelor and Masters programs in education and management faculties. The graduates of this campus are employed in different sectors, offices, organizations, schools, colleges, banks and so on. More than 1931 students have been enrolled in this campus comprising different race, gender, class, culture and territory. Some of the students have made the campus Feel proud by their remarkable achievements in the banking sector.

BMC is an autonomous community campus managed by a management committee as an apex body whose chairperson and members are selected from the members of the Campus Assembly. Campus Management Committee is responsible to formulate and implement policies and programs in the interest of the campus and the society. The campus has its constitution and comprehensive guidelines that state, define and regulate different provisions, rules and regulations in a systematic and practical way to achieve campus' primed goal and objectives of catering all-inclusive and up-to-date quality education.

BMC with its detailed and comprehensive master plan indicating the existing buildings and projected expansion, its 5 years strategic plan (2022-2026), clear academic structure, institutionalized administrative structure with transparent policies of selection and promotion of its teaching and non-teaching staff, equity establishment, provision of gratuity (Upadan), medical allowances and study leave, establishment of Akshya Kosh of Rupees 2 crore and above all clearly stated vision, mission, goals and objectives. BMC is strongly building up itself as a leading higher education institution in the far-western, Nepal.

BMC has been conducting its Sixth **Tracer Study Report** of the graduates representing 2021; following the suggestions and inspirations of UGC. The aim of this study is to help the institution finding out the where about of its graduates and identify the effectiveness of the programs offered to them as well as to gather feedback for further improvement. It also aims to find out the outcomes and employability of graduates of 2021

1.2 Objectives of the Study

The objectives of the study are to have a better understanding of the employment status and to find out the expectations and inspirations of the graduates. The study is trying to meet the following objectives:

- Investigate employment status of the graduates of 2021.
- Find out the kinds of programs the graduates are pursuing afterwards.
- Identify the difficulties faced by graduates for the placement in the market after the completion of the program.
- Relate the experiences and views of graduates as they evaluate BMC teaching and learning materials, institutional facilities and curriculum, in order to plan for future improvement.

1.3 Institutional Arrangements to conduct Study

With the campus' selection for the Nurturing Excellence in Higher Education Program (NEHEP)-Extended Performance based Funding by UGC, it has been conducting various assigned tasks to it and preparation of Graduates Tracer Study Report is one of them. BMC has also formed a subcommittee called Tracer Study Team with job specifications for the effective execution of Tracer Study Report.

1.4 Graduate Batch Taken for the Study

The Graduates taken for the study is of 2021 Batch which includes the graduates from the faculties of Management and Education. The total number of the traced out graduates are 22.

1.5 Data collection Instruments and Approach

The study has focused on the quality of higher education service provided to the students and the condition under which the graduates have been employed and its role in job-seeking, and how their areas of work are related to the programs offered by the campus. In addition, the study is expected to help identify which programs are still relevant to current market demands and the findings of the study are to analyze the strengths and weaknesses of the campus programs, and the relationships between education/ training and labor market needs. Hence, the methodology for this study is driven by the above issues and it is supposed to promote better understanding of the graduates' employability.

In order to get the needed information, both quantitative and qualitative methods were employed for data collection and a questionnaire for interviewing was piloted to make sure the right information could be collected. The Tracer Study subcommittee collected the graduate list of 2021. The notice for tracer study was shared using the social media/ Face Book. Those who couldn't come in contact were contacted through telephone and email. Required information was collected; individual forms were filled through face to face interview, telephonic conversation and via mails. All the selected information was compiled, analyzed and evaluated and the final report was prepared.

1.6 Scope and Limitations of the Study

There were in total 22 graduates in 2021 from Management faculty and only one graduate from Education faculty of Birendra Bidhya Mandir Campus. Altogether, the number of graduates were 23. 100 percentage of the total population was reached out.

This study has the following limitations

- This tracer study was conducted to the graduates of 2021 of BMC only.
- The study was conducted within a short period of time and limited budget.
- Besides face to face interview, social media email and telephone contact/conversation was the key tools of data collection.
- The study is confined to the graduates of Bachelor level only since Masters' Program cycle is not completed yet.

CHAPTER: TWO

2. Data Presentation and analysis

For this Tracer Study, BMC has taken the Graduates of 2021. It is carried upon the graduates of Birendra Bidhya Mandir Campus from the faculty of Management and Education. The total number of graduates were 23.

2.1.The Profile of the Graduates

There were in total 23 graduates in 2021 in different streams of Birendra Bidhya Mandir Campus. The numbers of graduates from Faculty of Education was one only. There were 22 graduates from faculty of Management. Out of them 17 were female and 6 were male graduates. Out of 23, 6 belonged to Janajati (Tharu Community) and one from Dalit community.

Table 1: Total graduates of the year 2021

S.N.	Programs	Total Graduates	Female Graduates	Male Graduates	Educationally Disadvantaged Graduates	
					Educationally Disadvantaged Janajati	Dalit
Bachelors	B.Ed.	1	1	-	-	1
	B.B.S.	22	17	5	6	-
Bachelors Total		23	18	5	6	1

Source: Campus administration (BMC)

Table 2: The caste wise composition of tracer study completed

Graduates 2021		Caste				Total
		Brahmin/Chhetri	Janajati	Dalit	Madhesi	
Program Completed	B.ED	--	-	1	-	1
	BBS	15	6		1	22
Total		15	6	1	1	23

2.2 Employment Status of the Graduates

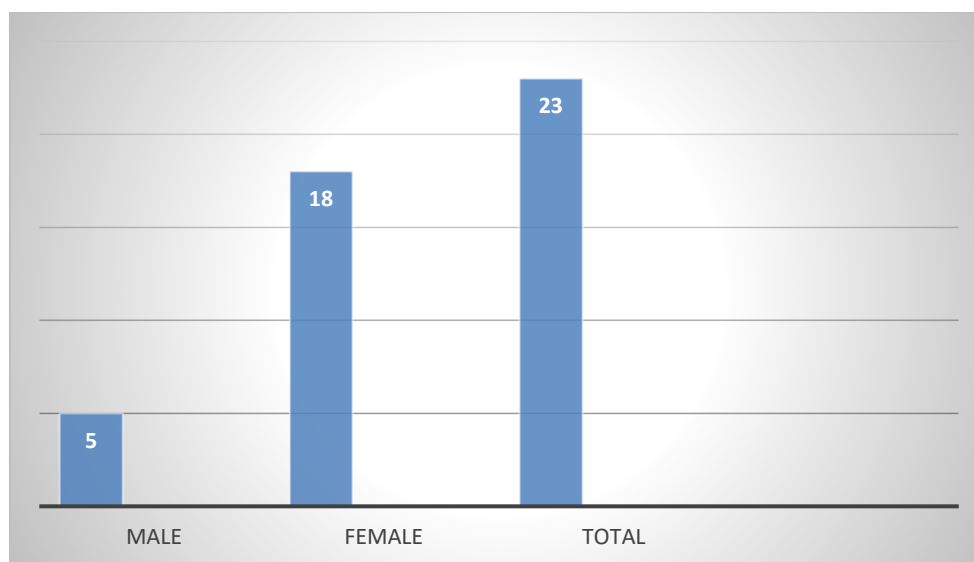
Of the total targeted population of 23 graduates comprising 5 male and 18 female in which the percent of the Janajatis (Tharu community) graduates is 26.09 percent. 6 graduates are employed and 17 are unemployed.

Table 3: Employment Status of the graduates

Faculty	Total Number of Graduates Approached	Male	Female	EDJ	Dalit	Employed	Unemployed	Self Employed	Service in an organization
Education	1	-	1	-	1	-	1	-	-
Management	22	5	17	6	-	5	16	1	6
Grand Total	23	5	18	6	-	5	17	1	6

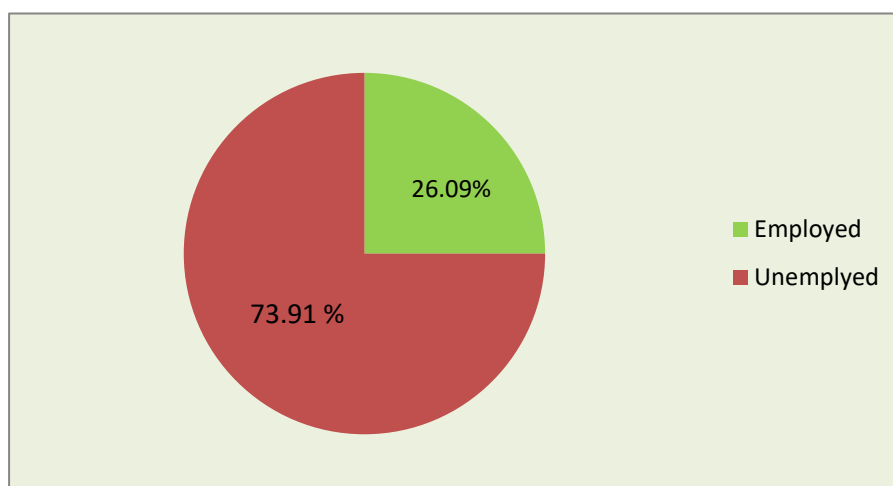
Source: Tracer Study Survey 2021

Figure 1: Gender wise composition of graduates



Source: Tracer Study Survey 2021

Figure 2: Employment status of Graduates



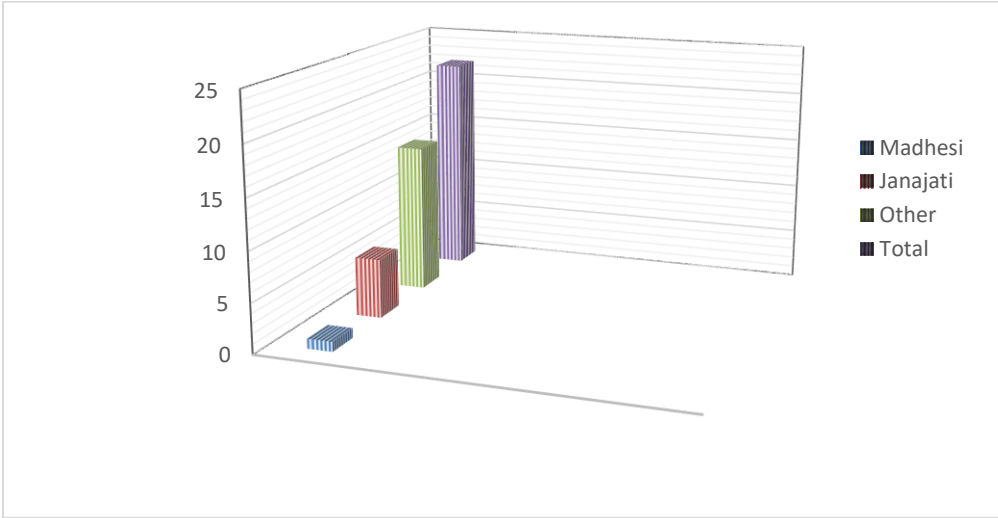
Source: Tracer Study Survey 2021

2.3 Faculty wise Analysis of Employment Status

2.3.1 Faculty of Management

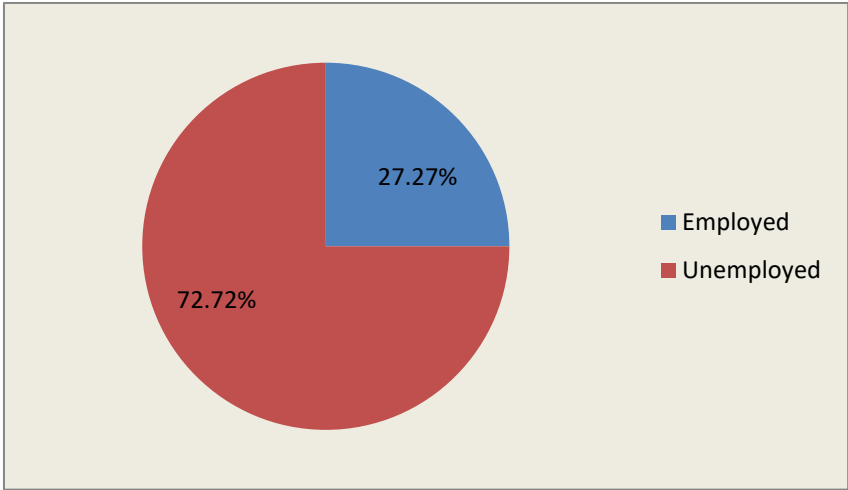
Of the targeted population of 23, graduates 22 were from faculty of management. There were no Dalit, one Madhesi, 6 Janajatis and 15 were from Brahman and Chetri. Out of 22 graduates, 6 are employed and 16 are unemployed.

Figure 3: Gender wise composition of graduates in Management



Source: Tracer Study Survey 2021

Figure 4: Employment Status of Graduates of Management



Source: Tracer Study Survey 2021

2.3.2 Faculty of Education

There were only one graduate from the faculty of Education; which is represented from the Dalit community. She was unemployed.

2.4. Expectations and Aspirations of Graduates

One of the objectives of this study was to find out the views of graduates regarding their study experiences at Birendra Bidhya Mandir Campus and about their employment status at present. It also tries to find out the graduates' expectation and aspirations towards the institution. The major emphasis of the graduates were on the following points:

- Learning should meet to their needs and requirements,
- There should be fix quota system for the enrollment,
- Teacher should be accountable towards the students,
- There should be connection between academic and industrial requirements,
- The campus must introduce short term professional courses,
- Focus should be given to skill based education,
- Technical and practical education should be introduced.

2.5. Employment Experience of Graduates

Gathered from the interview and data analysis, the total percentage of Employed graduates was 27.27 percent and unemployed was 72.72 percent.

To the question about the support of academic programs on their career and work experience, the majority of the respondents had following responses:

- The academic course content supports work at job but it doesn't provide any practical experience,
- Job market is too limited to accommodate large number of graduates,
- They complained that they have not got jobs yet,
- Most of the respondents have been expecting to get good job and high pay,
- At present, the respondents are more concerned with learning than satisfaction.

2.6.The Quality and Relevancy of Higher Education

One of the major objectives of the tracer study was to find out the quality and relevancy of the higher education in terms of the courses offered, problem solving, work placement, linked between programs and professional requirement etc.

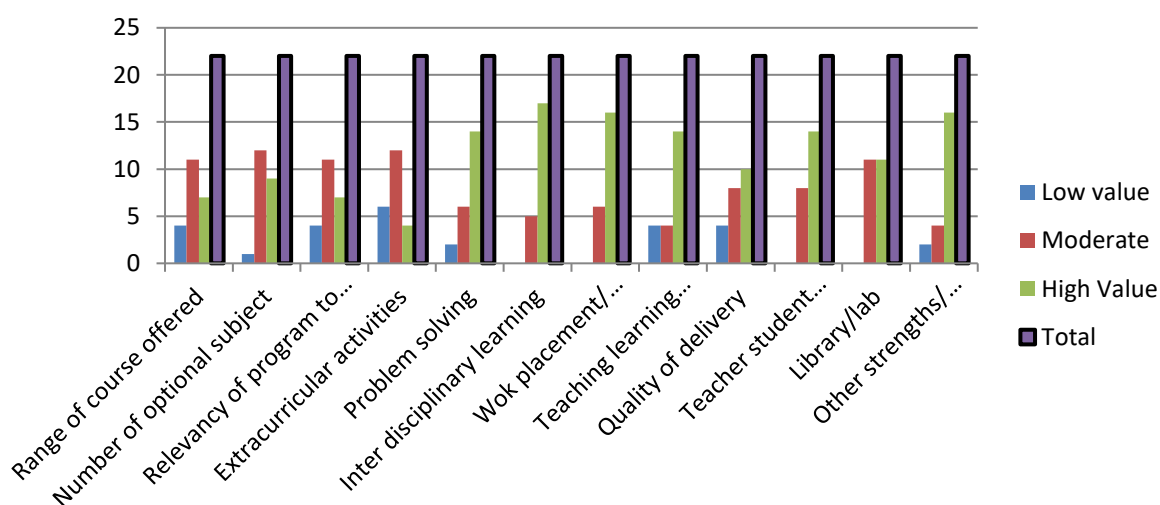
The respondents were to present their views regarding the issues mentioned above along with the strengths and weaknesses of the institution.

2.7. Issues Related to Quality and Relevance of Higher Education

This trace study has given us an opportunity to evaluate our institution and its programs. Graduates were asked about the strengths and weaknesses of the instructional programs that they attended. The rating values were ranged 0 to 5 on given particulars. The following summary table shows the strengths and weaknesses of the campus evaluated by the graduates and contribution of educational programs in their personal development:

S. N	Particulars	Low value	Moderate	High Value	Total
1.	Range of course offered	4	12	7	23
2.	Number of optional subject	1	12	10	23
3.	Relevancy of program to professional requirements	4	12	7	23
4.	Extracurricular activities	6	12	5	23
5.	Problem solving	2	6	15	23
6.	Inter disciplinary learning	-	5	18	23
7.	Wok placement/ attachment	-	6	17	23
8.	Teaching learning environment	4	4	15	23
9.	Quality of delivery	4	8	11	23
10.	Teacher student relationship	-	9	14	23
11.	Library/lab		12	11	23
12.	Other strengths/ weaknesses (please specify)	2	4	17	23

The table can be represented in the form of diagram.



Source: Tracer Study Survey 2021

2.8. Refectory (Canteen)

The campus canteen is spacious enough with hygienic environment to serve quality snacks and food for students and staff members as per season.

Details:

Length: 24 ft.

Breadth: 12 ft.

Veranda: 32 ft.

Furniture:

Table: 6

Chair: 10

Desk: 6

Bench: 6

Water facility:

24 hours running water facility. 9 Aqua filters for pure (hot and cold) drinking water for required number of students.

Urinal:

The campus has significant numbers of toilets separate for both gents and ladies, for students as well as staff members.

Toilets (Gents):

No. of toilets: 3

Area in square feet: 32038

Length: 19 feet

Breadth: 9 feet

Toilets (Ladies):

No. of toilets: 3

Area in square feet: 33810

Length: 19 feet

Breadth: 9 feet

Toilets (Staff) :

No. of toilets: 1

Length: 15 feet

Breadth: 6 feet

CHAPTER: THREE

3. Major Findings

The major findings of the Tracer Study Report of Birendra Bidhya Mandir Campus are as follows:

- The total numbers of graduates were 23 with 5 male and 18 female. Among them 6 belonged to Janajatis ie. Tharu Community, One belonged to Dalit, one belonged to Madhesi and 15 Brahmin and Chetri.
- The Employed percentage is 26.09.
- The Unemployed percentage is 73.91
- Job market is too limited for the Bachelor level graduates.
- In private sector, Master Degree holders are preferred.
- The course offered at University/College provides little skill and experiences for the job.
- The graduates are not satisfied with the kind of course offered. They demand career based courses.
- From the finding of the study it is clear that higher education offers more opportunities in a wide range of fields.
- The graduates are applying their professional knowledge and skills as well as adding qualities like self-confidence, leadership, willingness to learn etc.
- Majority of the respondents are satisfied with the delivery of the services by the college.
- The study has shown that the new graduates are working in the field of teaching, Public services, banks, co-operatives, health sector as well as various fields.
- Regarding the relevancy of the programs to the graduates' professional requirements, most of the management graduates regarded it a highly relevant programs offered by Birendra Bidhya Mandir Campus.
- It is found that the sanitary facilities are in better condition in the campus.
- The campus canteen is hygienic and serves better food to the students.
- Sufficient, modern toilets for students and teachers.
- Good facilities of sports like football ground, Volleyball courts, Badminton courts, Table Tennis etc.
- There are required text books in the Library but shortage of reference books.
- Well management of pure drinking water facilities.

3.1. Implications to institutional Reform.

To make learning a life - long process, higher educational institutions need to build up as an ideal place with inspiring values worth remembering for graduates for whole life. How can the institutions achieve this? Graduates' responses and feedback can inspire the campus in a right track. Birendra Bidhya Mandir Campus must make strategies and policies to make its programs highly relevant to practical life.

Birendra Bidhya Mandir Campus needs to establish good relationship with private and public sector organizations for job opportunities of its graduates. The campus requires to give guidance and counseling to its graduates for the preparation of government jobs and international jobs.

This trace study is very helpful in bringing institutional reforms to make teaching and learning more effective and enjoyable. We can also evaluate the relevancy of the campus programs and make them up to date with new information, technology and methodology.

Modern age is the age of competition. So, campus programs must be prepared enough to provide quality education to its graduates and graduates must be capable enough to face the challenges in the market. Learners must be equipped with communication skills, team work, decision making skills. Our graduates must be confident to tackle all the problems successfully.

The campus should provide proper IT skills and research skills to its graduates. The extracurricular activities also should encourage its students to be smart.

Birendra Vidhya Mandir Campus also can make relationship with different organizations to recruit its graduates. It also can join hands with private sector. We can focus on quality, attribute, subjects and programs to empower our graduates.

Our campus also should encourage its graduates to set goals in their life and to work hard to pursue the goal. Our campus needs to introduce technical and vocational education that has high value in employment.

Our campus is planning to enhance research culture among the graduates. All the faculties are encouraged to conduct this. Faculty members and graduates are also encouraged for research activities.

After the study, we have come to a conclusion that there are certain problems regarding the programs students study and the type of job they pursue. For instance, after completing Bachelor level in Management, the graduates are ready to take the job of teaching. There is a strong need of counseling and effective guidance.

CHAPTER: FOUR

4. Conclusion and Recommendation

4.1. Conclusion

From the above findings, a number of conclusions can be drawn about the employment opportunities from our graduates currently in the field and relevancy of the college programs, teaching learning environment, quality of delivery, teacher student relationship, extracurricular activities, library/lab facilities etc. Following are the major conclusions which respond to the research objectives that were set out for this study.

- This study report is the Sixth effort to find out about the employability of the graduates. It has provided both feedback and review on employability and campus programs.
- Majority of the graduates seemed to be unemployed.
- From the study, it is learnt that mostly graduates are unemployed. Only few are engaged in self-work.
- The graduates from the Faculty of Management have more chances of getting employed than the graduates of other faculties.
- The analysis shows that there is demand of Master's Degree holder graduates in the market.
- The study shows that majority of Janajatis are coming forward to study.
- The programs offered by the institution do not address the current needs of the market.
- The graduates have the expectation that campus should help them to find jobs and start market oriented programs.
- Most of the Management graduates are seen Master's Degree holders..

4.2 Recommendations

The Tracer Study Team conducted the Tracer study of graduates of 2021 of Birendra Bidhya Mandir Campus. This study was conducted within a short period of time. Being the Sixth of its kind for Birendra Bidhya Mandir Campus, it has provided both feedback and review on employability, job satisfaction of graduates and the effectiveness of campus programs. The Tracer Study Report Suggests the following Recommendations to the institution:

- The Campus should make the task of Tracer study as an integral part.
- The strategic plan of Birendra Bidhya Mandir Campus should incorporate the suggestions made on Tracer Study Report.
- The campus should promote wide range professional courses, field based learning, counseling etc to improve the institution.
- The backward community students should be given more priority.
- Birendra Bidhya Mandir Campus should digitalize its records.
- Birendra Bidhya Mandir Campus should introduce E-library facilities.
- The institute should intensify the relationship between parent-teacher and teacher-students.
- It must expand its academic programs by introducing new marketable programs in Bachelor and Master Degree.
- Team Work is must for the betterment and improvement for institution.

Annex: 1 Tracer Study Profile of BirendraBidhyaMandir Campus, Tikapur Kailali

ANNEX II: GRADUATE VERIFICATION PROFILES

Campus Name: BirendraBidhyaMandir Campus

Address: Tikapur, Kailali

GRADUATE LIST OF: 2021 OR BSCHELOR LEVEL/GRADUATE IN THE YEAR

Status: E=Employed, U=Unemployed, J=Janjati, D=Dalit,

S.N	Name of Graduate	Sex	Faculty/Program	Employment Status	Contact No.	Remarks
1	Dhiraj Tiruwa	Female	Education	Un employed	9804638193	Dalit
2	Aarati Regmi	Female	Management	Employed	9843721014	Brahaman
3	Archana Dhakal	Female	Management	Un employed	9865620916	Brahaman
4	Arun Tharu	Male	Management	Employed	9821507914	Janajati
5	Babita Bhandari	Female	Management	Self-employed	9861972519	Brahaman
6	Bina Rawal	Female	Management	Un employed	9848969087	Kshetri
7	Chitra Bhandari	Female	Management	Un employed	9861825919	Brahaman
8	Dhirja Bajgain	Female	Management	Un employed	9865469483	Brahaman
9	Dil Bahadur Kathayat	Male	Management	Un employed	9846988810	Kshetri
10	Durga Sharma	Female	Management	Un employed	9815635894	Brahaman
11	Janaki Sharma	Female	Management	Un employed	9867940925	Brahaman
12	Kritika Acharya	Female	Management	Un employed	9741838388	Brahaman
13	Kumar Bista	Male	Management	Un employed	9848629194	Kshetri
14	Maya Chaudhary	Female	Management	Un employed	9815674826	Janajati
15	Rajendra Bhandari	Male	Management	Employed	9866465096	Brahaman
16	Ribha Jha	Female	Management	Un employed	9821616401	Brahaman
17	Sanjana Dhangaura Tharu	Male	Management	Un employed	9822627927	Janajati
18	Sanju Tharu	Female	Management	Un employed	9825616878	Janajati
19	Sapana Rawal	Female	Management	Un employed	9864752062	Kshetri
20	Satyan Swari Badayak	Female	Management	Employed	9825676583	Janajati
21	Siddha Raj Ojha	Male	Management	Employed	9865755785	Brahaman
22	Suman Chaudhary	Female	Management	Un employed	9862371687	Janajati
23	Sushila Bist	Female	Management	Un employed	9869801653	Kshetri

GRADUATES' LIST FOR BACHELOR LEVEL/GRADUATES IN THE YEAR 2021 AD

ANNEX I: GRADUATE VERIFICATION DOCUMENT

Campus Name: BirendraBidhyaMandir Campus

Address: Tikapur, Kailali

Status: E=Employed,

U=Unemployed,

J=Janjati,

D=Dalit,

S.N	Name of Graduate	Level	Faculty/Program	TU Registration No.	Type			
					M	F	EDJ	D
1	Dhiraj Tiruwa	Bachelor	Education	9-2-578-74-2017		√		√
2	Aarati Regmi	Bachelor	Management	7-2-578-1-2017		√		
3	Arun Tharu	Bachelor	Management	7-2-578-9-2016	√		√	
4	Archana Dhakal	Bachelor	Management	7-2-578-3-2017		√		
5	Babita Bhandari	Bachelor	Management	7-2-578-5-2017		√		
6	Bina Rawal	Bachelor	Management	7-2-578-6-2017		√		
7	Chitra Bhandari	Bachelor	Management	7-2-578-9-2017		√		
8	Dhirja Bajgain	Bachelor	Management	7-2-578-10-2017		√		
9	Dil Bahadur Kathayat	Bachelor	Management	7-2-578-11-2017	√			
10	Durga sharma	Bachelor	Management	7-2-578-12-2017		√		
11	Janaki Sharma	Bachelor	Management	7-2-578-26-2016		√		
12	Kritika Acharya	Bachelor	Management	7-2-578-15-2017		√		
13	Kumar Bista	Bachelor	Management	7-2-578-30-2016	√			
14	Maya Chaudhary	Bachelor	Management	7-2-578-18-2017		√	√	
15	Rajendra Bhandari	Bachelor	Management	7-2-578-29-2017	√			
16	Ribha Jha	Bachelor	Management	7-2-578-34-2017		√		
17	Sanjana Dhangaura Tharu	Bachelor	Management	7-2-578-58-2016		√	√	
18	Sanju Tharu	Bachelor	Management	7-2-578-39-2017		√	√	
19	Sapana Rawal	Bachelor	Management	7-2-578-41-2017		√		
20	Satyan Swari Badayak	Bachelor	Management	7-2-578-30-2014		√	√	
21	Siddha Raj Ojha	Bachelor	Management	7-2-578-49-2017	√			
22	Suman Chaudhary	Bachelor	Management	7-2-578-66-2016		√	√	
23	Sushila Bist	Bachelor	Management	7-2-578-53-2017		√		

Graduates summary

Total Graduates - 23

Employed - 5

Unemployed - 17

Self-employed – 1

Male-5

Female-18

Prepared By:

Prem Singh Tiruwa

.....

Campus Chief

.....

Campus Seal